

RIDGID[®]



Invest in RIDGID® Tools and We Protect Your Investment



What Is Covered

RIDGID tools are warranted to be free of defects in workmanship and material.

How Long Coverage Lasts

This warranty lasts for the lifetime of the RIDGID tool. Warranty coverage ends when the product becomes unusable for reasons other than defects in workmanship or material.

How You Can Get Service

To obtain the benefit of this warranty, deliver via prepaid transportation the complete product to Ridge Tool Company, Elyria, Ohio, or any RIDGID Independent Service Center. Pipe wrenches and other hand tools should be returned to the place of purchase.

What We Will Do To Correct Problems

Warranted products will be repaired or replaced, at the option of Ridge Tool, and returned at no charge; or, if after three attempts to repair or replace during the warranty period the product is still defective, you can elect to receive a full refund of your purchase price.

What Is Not Covered

Failures due to misuse, abuse or normal wear and tear are not covered by this warranty. Ridge Tool shall not be responsible for any incidental or consequential damages.

How Local Law Relates To The Warranty

Some states do not allow the exclusion or limitation of incidental or consequential damages, so the above limitation or exclusion may not apply to you. This warranty gives you specific rights, and you may also have other rights, which vary, from state to state, province to province, or country to country.

No Other Express Warranty Applies

This Full Lifetime Warranty is the sole and exclusive warranty for RIDGID products. No employee, agent, dealer, or other person is authorized to alter this warranty or make any other warranty on behalf of the Ridge Tool Company.

Executing the RIDGID Lifetime Warranty

Ridge Tool Company offers a comprehensive lifetime warranty to support products purchased under the RIDGID Brand, excluding licensed goods.

RIDGID branded products are built with reliability, dependability and durability and are covered by a Full Lifetime Warranty against defects in materials or workmanship.

In the event that you have a problem with your RIDGID product due to a defect in materials or poor workmanship, we will attempt to remedy the problem in accordance with our printed warranty policy in a timely manner. For warranty information on RIDGID licensed goods, visit www.RIDGID.com.

Normal Wear and Tear

Commonly, our tools are used on job sites in the most demanding applications and environments. Under these conditions and over time, the RIDGID product may experience normal wear and tear and require service. While normal wear and tear is not considered a “defect” and is not covered by the RIDGID Lifetime Warranty, it is our goal to get your tool back in service as soon as possible. To help expedite this service, Ridge Tool offers a complete assortment of service parts and a network of RIDGID Independent Service Centers to meet your service needs. Technicians throughout our Service Center Network are Factory Trained to provide quality repair service as well as accurate determination and execution of RIDGID warranty if required. For a complete list of RIDGID Independent Service Centers visit www.RIDGID.com.

Defects in Materials and Workmanship

It is our experience that a product that fails prematurely due to a manufacturing defect in materials or workmanship, will generally do so very early in the product’s life cycle, often the first or second time the product is used. When returned for inspection, these products are generally found to be in “like new” condition and show very little signs of use. It is uncommon for a product that was manufactured with a defect, to survive under normal use for any extended period of time. Products that are returned for warranty inspection after months or years of continuous reliable service are rarely found to be defective. The most common demand for service is the result of normal wear and tear issues, which are not considered to be a defect in materials or workmanship.

• **1923** Ridge Tool Company founded with the introduction of the RIDGID pipe wrench.

• **1940** Ridge Tool introduces power threading machines.

• **1943** Ridge Tool Company establishes its headquarters in Elyria, Ohio USA.

• **1946** Ridge Tool begins exporting products to help rebuild Europe.

Complete Product and Service Support Online 24/7

Sometimes, a RIDGID® tool or a piece of equipment, will need to be repaired or serviced. When that time comes, you have three options for getting your tools back to work fast and performing like new:

The RIDGID Independent Service Center Network: For optimum service of your RIDGID tools and equipment, there is no better choice than a RIDGID Service Center. To locate the service center near you, go to RIDGID.com. Under the Support selection, choose Service Centers and Repair.

We make repairs and service convenient.

Do-it-Yourself: Ridge Tool offers you 24/7 access to genuine RIDGID replacement parts at www.ridgidparts.com.

RIDGID products are designed and built to the highest quality standards to perform specific tasks with optimum and lasting efficiency. Tool components are made to complement each other to form an ideally functioning “system”. To preserve the high standards of performance you expect from RIDGID tools, it is important to make sure you use trademarked RIDGID replacement parts.

Look for, and insist on, the “Genuine RIDGID Replacement Parts” label on all of the parts you buy. It is your best assurance of performance, efficiency and long service life.

These are the values that built our reputation.

Use the RIDGID Factory Service Center: For Customers in the USA who need fast service, contact the Ridge Tool Factory Service Center in advance when you are sending an item in for repairs. Just complete our “Request Tool Repair” online form at <https://www.ridgid.com/us/en/tool-repair-form>. Your completed email form alerts our service staff that your tool is on its way. Then print out the form and include it with the tool being shipped to the Factory Service Center.

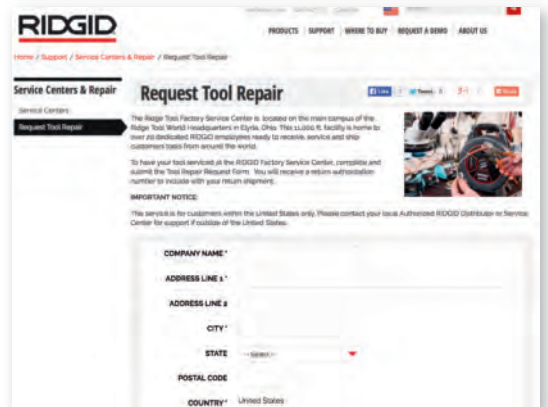
Easy and smart.

Distributor 24x7 Service On Demand

RIDGID distributors have access to a comprehensive knowledgebase to get answers to a wealth of product application and service questions – 24 hours a day, 7 days a week. Here are just of the the many things you can do.

- Create a parts order with complete information with just a few taps of the keyboard.
- Use online warranty claims processing and assistance with executing the RIDGID warranty.
- Create and store repair quotes.
- FAQs: Tips and Tricks, Service Notes and more are included to provide fast answers to commonly asked questions.

At Ridge Tool, we make it easy.



• **1964** A new sales and manufacturing facility opens in St. Truiden, Belgium.

• **1966** Ridge Tool becomes part of Emerson Professional Tools™.

• **1967** The Kollmann line of drain cleaning and diagnostic tools becomes part of Ridge Tool.

• **1972** A new sales and manufacturing facility opens in Sao Paulo, Brazil.

RIDGE TOOL COMPANY

Quality Management Systems

Ridge Tool manufacturing facilities listed below are certified to BS EN ISO 9001-2000 Quality Management System Standards by an accredited Registrar.

Manufacturing Plant	Accredited Registrar
Elyria, Ohio	BSI
Erie, Pennsylvania	BSI
Orange, Virginia	BVQI

Distributor Support

Rely on your RIDGID® Distributor for our complete line of tools, parts, service and information. Your RIDGID Distributor:

- Keeps you competitive with the latest products for your industry.
- Guarantees your purchasing power by buying from hundreds of suppliers.
- Helps you get back in business fast when you need parts or service.
- Manages traffic so you get the goods on time and at the least cost.
- Warehouses products for you, saving capital, insurance and overhead.
- Brings technical aid to your staff to solve your problems.
- Simplifies your record-keeping with one billing for all your tool needs.

Parts and Repair Parts Catalogs

Catalogs illustrating parts for hand tools, machines and drain cleaning products are available upon request and cover all tools listed in this catalog. For ordering the exact parts needed, be sure to order by the catalog numbers that appear in the parts catalogs, as well as any other data that will help us avoid errors in filling the order.

Estimates on repairs and prices on repair parts will be furnished upon receipt of the tool or machine at our factory, or at a RIDGID Independent Authorized Service Center. Return all tools and machines freight prepaid.

Please Note

Engineering advances may cause changes to information shown in this catalog. Please contact your RIDGID distributor for current information.

Do not use RIDGID tools and equipment for any other purpose beyond those they are intended for. Always follow any instructions and warnings provided with RIDGID tools and equipment.



ISO 9001
FM 65410
Elyria, Ohio



ISO 9001
FM 68317
Erie, Pennsylvania



ISO 9001
Orange, Virginia / US 09000465



• **1991** Ridge Tool establishes European headquarters and central distribution facility in Leuven, Belgium.

• **1996** Ridge Tool acquires Peddinghaus of Gevelsberg, Germany.

• **2002** Ridge Tool acquires Von Arx of Sissach, Switzerland.

Ridge Tool U.S. Patents*

K-60SP Drain Cleaner	5,657,505	K-400	8,060,968
K-40 Drain Cleaner	6,009,588; 6,243,905; 6,412,136	Press Snap	8,225,511
226 Soil Pipe Cutter	6,141,876	Faucet & Sink Installer (Basin Nut Wrench)	D560,986
Power Spin	6,158,076	K-400	D579,612
Roll Groover	6,272,895; 6,591,652	Drain Cleaning	D570,558; D582,108; D595,911
K-380 Drum Machine	6,360,397	Pipe Cutter	D626,812; D660,116
117/118 Tubing Cutter	6,393,700; D485,150	K-45	D629271
One Stop Wrench	6,523,440; D462,245	Pipe Vises	8,601,855; D657933; D645319; D645320; D645321; D645322; D645323; D645324; D645325; D645326; D645327
915 Roll Groover	6,591,652	Locators	8,515,702; D699604
920 Roll Groover	6,688,150; 6,708,545	Pressing	5,611,228; 6,244,085; 6,434,998; 6,510,719; 6,510,723; 6,662,621; 6,694,586; 6,729,009; 7,000,448; 7,036,806; 7,124,608; 7,146,839; 7,155,955; 7,260,975; 7,421,871; 7,578,159; 7,634,859; 7,665,343; 7,979,980; 8,151,703; 8,276,429; 8,316,685; 8,418,520; 8,590,352; 8,613,642; D562,098; D593,828; D598,259
RapidGrip Pipe Wrench	6,742,419; 7,044,030; D474,380		
418 Oiler	7,090,054; D498,487		
Auto Spin	7,478,451; D509,929		
425 Work Stand	7,537,186		
Drain Cleaning	7,685,669; 8,046,862; 8,176,593, 8,413,347		
Tube Cutter	7,716,840		
Pipe Cutter	7,743,509		
Inspection	7,889,980; D567,123; D573,042; D578,906; D573,903; D668,566; D668,567; D668,568		

Ridge Tool U.S. Trademarks*

Registered Marks ®

4PIN
 AUTOFEED
 Chevron Design
 CHEVRON Design
 E3 (Stylized and/or with Design)
 JOBMAX
 KWIK-SPIN
 MAXCORE
 MICRO CG-100
 MICRODRAIN
 microEXPLORER
 MS-UV & Design
 NAVITRACK
 NAVITRACK SCOUT
 OIL LESS GOLD
 PEX Design
 POWER SPIN
 POWERFUL. DURABLE. PROFESSIONAL.
 PRESS SNAP
 PRESSING TECHNOLOGY
 QCS (QUICKCHANGE SYSTEM)

RAPIDGRIP
 RAPRENCH
 REPEAT-A-CUT
 RIDG-BACK
 RIDGE
 RIDGE TOOL
 RIDGID
 RIDGID TOOL
 RIDGID TOOLS
 RIDGID (Stylized) (D & G Adjacent With Solid Bar)
 RIDGID (Stylized) (D & G Adjacent)
 RIDGID (Stylized) (D & G Adjacent) & Red Bar
 RIDGID (Stylized) (D & G Interlocked)
 RIDGID (Stylized) (D & G Interlocked) &
 Wrench Design
 RIDGID AIR MOVER (Stylized)
 RIDGIDCONNECT
 RIDGID KOLLMANN & Design
 RIDGIDCONNECT
 RIDGID CROSSCHEK
 RIDGID QUICKCHANGE SYSTEM
 RIDGID PEDDINGHAUS

RIDGID PRESSING TECHNOLOGY
 RIDGIDSKETCH
 RIKO
 RITCO
 ROOT RANGER
 ROSCA CORTE
 SCOUT
 SEE IT. FIND IT. FIX IT.
 SEE IT. FIND IT. SOLVE IT.
 SOF-TOUCH
 STRONGER. FASTER. LONGER LIFE.
 THE RIDGE TOOL COMPANY
 TRIBENDER
 TRISTAND
 U (Stylized)
 UNIVERSAL GOLD
 WARRANTY MEDALLION Design (Shaded)
 WARRANTY MEDALLION Design (Unshaded)
 WE BUILD REPUTATIONS
 X-CEL

• **TODAY** Ridge Tool has manufacturing facilities in the USA, Europe and Asia • Ridge Tool products are available in more than 150 countries around the world through a network of leading distributors • Ridge Tool offers more than 300 types of tools and machines in over 4,000 models and sizes.

*Current at time of print.

WRENCHES

RIDGID® Pipe Wrenches are world-renowned for their unsurpassed toughness and serviceability. The original heavy-duty pipe wrench, pictured below, has earned the confidence of pipe professionals for over 80 years because it does the job right the first time, every time. RIDGID Pipe Wrenches are also available in a wide variety of purpose-built configurations, and are available with cast aluminum handles that offer an average 40% weight reduction.

Anatomy of a Legend

Full floating forged hook jaw for fast ratcheting action.



Graduations on hook jaw show approximate size of opening for different pipe sizes.

Knurled adjustment nut for easy one-handed operation.



Extra large self-cleaning threads.

Wide gripping surface for increased comfort.



Replaceable, twice hardened alloy steel jaws. Precision-milled, biased tooth design maximizes gripping strength and tool life.



Large flange prevents nut from being inadvertently rotated when wrench is set down.

I-Beam handle allows for maximum strength and minimal weight.

Convenient hanging hole for easy storage. Enlarged handle end helps prevent slippage.



RIDGID Lifetime Warranty.

Proudly manufactured at RIDGID headquarters in Elyria, Ohio, U.S.A.



RIDGID® Wrenches

- Time-tested designs.
- Often imitated, never duplicated.
- Efficient designs to improve productivity.
- Innovative to provide new solutions to old problems.

Wrench Type	No. of Models	Nom. Size (in.)	Capacity (in.)	Page
Heavy-Duty Straight Pipe Wrenches				
Straight Pipe	10	6 - 60	¾ - 8	1.2
Aluminum Straight	7	10 - 48	1½ - 6	1.2
RapidGrip® Wrenches				
Heavy-Duty RapidGrip	2	10 - 14	1½ - 2	1.2
Aluminum RapidGrip	2	10 - 14	2 - 3	1.3
End Pipe Wrenches				
End Pipe	8	6-36	¾ - 5	1.3
Aluminum End Pipe	4	10-24	1½ - 3	1.3
Raprench®	1	10	1½	1.3
Offset Wrenches				
Heavy-Duty Offset	3	14 - 24	2 - 3	1.4
Aluminum Offset	3	14 - 24	2 - 3	1.4
Hex Wrenches				
Spud	1	12	¾ - 2¾	1.5
Chain	5	—	2 - 4½	1.5
Compound Leverage				
Chain Tong s	6	—	¼ - 18	1.6
Strap	8	—	2 - 5	1.6
Adjustable	8	6 - 24	¾ - 27/16	1.6
Specific Purpose Wrenches				
Basin	3	10 - 17	¾ - 2½	1.7
Faucet & Sink Installer	1	10¼	—	1.7
Internal	1	4½	1 - 2	1.8
One Stop	1	—	—	1.8
Wrench Parts	—	—	—	1.9

WRENCHES

Heavy-Duty Straight Pipe Wrenches



Straight Pipe Wrenches

- Straight Pipe Wrenches have a sturdy, cast-iron housing and I-beam handle with full floating forged hook jaw, featuring self cleaning threads with replaceable hook and heel jaws.
- Heavy-duty pipe wrenches comply with federal specifications GGG-W65IE, Type II, Class A.

Catalog No.	Model No.	Description	Nom. Size		Pipe Capacity		Weight		Std. Pack
			in.	mm	in.	mm	lb.	kg	
31000	6	Heavy-Duty Straight Pipe Wrench	6	150	3/4	20	1/2	0.2	6
31005	8	Heavy-Duty Straight Pipe Wrench	8	200	1	25	3/4	0.3	6
31010	10	Heavy-Duty Straight Pipe Wrench	10	250	1 1/2	40	1 3/4	0.8	6
31015	12	Heavy-Duty Straight Pipe Wrench	12	300	2	50	2 3/4	1.2	6
31020	14	Heavy-Duty Straight Pipe Wrench	14	350	2	50	3 1/2	1.6	6
31025	18	Heavy-Duty Straight Pipe Wrench	18	450	2 1/2	65	5 3/4	2.6	6
31030	24	Heavy-Duty Straight Pipe Wrench	24	600	3	80	9 3/4	4.4	3
31035	36	Heavy-Duty Straight Pipe Wrench	36	900	5	125	19	8.7	1
31040	48	Heavy-Duty Straight Pipe Wrench	48	1,200	6	150	34 1/4	15.6	1
31045	60	Heavy-Duty Straight Pipe Wrench	60	1,500	8	200	51 1/4	23.3	1

Nom. Size = nominal length of handle

Nom. Pipe Capacity = maximum nominal diameter of steel pipe



Aluminum Straight Pipe Wrenches

RIDGID® Aluminum Pipe Wrenches provide professional strength in lightweight aluminum. The Aluminum Straight Pipe Wrench offers the same durability and ease-of-use found in all RIDGID heavy-duty wrenches.

Catalog No.	Model No.	Description	Nom. Size		Pipe Capacity		Weight		Std. Pack
			in.	mm	in.	mm	lb.	kg	
31090	810	Aluminum Straight Pipe Wrench	10	250	1 1/2	40	1	0.4	6
47057	812	Aluminum Straight Pipe Wrench	12	300	2	50	2 1/2	1.1	6
31095	814	Aluminum Straight Pipe Wrench	14	350	2	50	2 1/2	1.1	6
31100	818	Aluminum Straight Pipe Wrench	18	450	2 1/2	65	3 3/4	1.7	6
31105	824	Aluminum Straight Pipe Wrench	24	600	3	80	6	2.7	3
31110	836	Aluminum Straight Pipe Wrench	36	900	5	125	11	5.0	1
31115	848	Aluminum Straight Pipe Wrench	48	1,200	6	150	18 1/2	8.4	1

Nom. Size = nominal length of handle

Nom. Pipe Capacity = maximum nominal diameter of steel pipe

RapidGrip® Pipe Wrenches



RapidGrip® Wrenches

- Quick one-handed operation makes your jobs move faster.
- The spring-loaded jaw design provides rapid ratcheting action.
- Unique combination heel/hook jaw design aggressively bites the work piece and insures a secure grip.

Catalog No.	Model No.	Description	Nom. Size		Pipe Capacity		Fittings Capacity		Weight		Std. Pack
			in.	mm	in.	mm	in.	mm	lb.	kg	
10348	10	RapidGrip Wrench	10	250	1 1/2	40.0	1	25.0	1.6	0.7	12
10358	14	RapidGrip Wrench	14	350	2	50.0	1 1/2	40.0	3.1	1.4	10

Nom. Size = nominal length of handle

Nom. Pipe Capacity = maximum nominal diameter of steel pipe

Fittings Capacity = maximum nominal diameter of fitting

RapidGrip® Pipe Wrenches



Aluminum RapidGrip® Wrenches

- All the great benefits of the heavy-duty RapidGrip wrench. 35% lighter than heavy-duty models.
- Quick one-handed operation makes your jobs move faster.
- The spring-loaded jaw design provides rapid ratcheting action.
- Unique combination heel/hook jaw design aggressively bites the work piece and insures a secure grip.

Catalog No.	Model No.	Description	Nom. Size		Pipe Capacity		Fittings Capacity		Weight		Std. Pack
			in.	mm	in.	mm	in.	mm	lb.	kg	
12693	14	Aluminum RapidGrip Wrench	14	350	2	50	1½	40	2.1	0.9	10
12698	18	Aluminum RapidGrip Wrench	18	450	3	80	2½	65	4.3	1.9	1

Nom. Size = nominal length of handle
Nom. Pipe Capacity = maximum nominal diameter of steel pipe
Fittings capacity = maximum nominal diameter of fitting

End Pipe Wrenches



End Pipe Wrenches

An ideal wrench for pipe work close to a wall, in tight quarters or in closely-spaced parallel lines.

Catalog No.	Model No.	Description	Nom. Size		Pipe Capacity		Weight		Std. Pack
			in.	mm	in.	mm	lb.	kg	
31050	E-6	End Pipe Wrench	6	150	¾	20	½	0.2	6
31055	E-8	End Pipe Wrench	8	200	1	25	¾	0.3	6
31060	E-10	End Pipe Wrench	10	250	1½	40	1¾	0.8	6
31065	E-12	End Pipe Wrench	12	300	2	50	2¾	1.2	6
31070	E-14	End Pipe Wrench	14	350	2	50	3½	1.6	6
31075	E-18	End Pipe Wrench	18	450	2½	65	5¾	2.6	6
31080	E-24	End Pipe Wrench	24	600	3	80	9¾	4.4	6
31085	E-36	End Pipe Wrench	36	900	5	125	19	8.7	1

Nom. Size = nominal length of handle
Nom. Pipe Capacity = maximum nominal diameter of steel pipe



Aluminum End Wrenches

The Aluminum End Wrench is ideal for jobs in tight spaces and over-head applications. Designed for easy access in close parallel lines. 40% lighter than heavy-duty wrenches.

Catalog No.	Model No.	Description	Nom. Size		Pipe Capacity		Weight		Std. Pack
			in.	mm	in.	mm	lb.	kg	
90107	E-910	Aluminum End Wrench	10	250	1½	40	1	0.4	6
90117	E-914	Aluminum End Wrench	14	350	2	50	2	0.9	6
90122	E-918	Aluminum End Wrench	18	450	2½	65	3	1.4	6
90127	E-924	Aluminum End Wrench	24	600	3	80	5	2.2	6

Nom. Size = nominal length of handle
Nom. Pipe Capacity = maximum nominal diameter of steel pipe

WRENCHES

Raprench® Wrenches



Raprench® Wrenches

A deeper and broader hook jaw housing provides a smooth, flat surface that is ideal for occasional use as a hammer.

Catalog No.	Model No.	Description	Nom. Size		Pipe Capacity		Weight		Std. Pack
			in.	mm	in.	mm	lb.	kg	
31395	10	Raprench Wrench	10	250	1 1/2	40	2	0.9	6

Nom. Size = nominal length of handle

Nom. Pipe Capacity = maximum nominal diameter of steel pipe

Offset Wrenches



Heavy-Duty Offset Pipe Wrenches

The Heavy Duty Offset Pipe Wrench features a jaw opening parallel to the handle and a narrower hook jaw head. Provides easy entry into tight spots.

Catalog No.	Model No.	Description	Nom. Size		Pipe Capacity		Weight		Std. Pack
			in.	mm	in.	mm	lb.	kg	
89435	14	Offset Pipe Wrench	14	350	2	50	2 1/4	1.0	6
89440	18	Offset Pipe Wrench	18	450	2 1/2	65	5 3/4	2.6	6
89445	24	Offset Pipe Wrench	24	600	3	80	9 3/4	4.4	6

Nom. Size = nominal length of handle

Nom. Pipe Capacity = maximum nominal diameter of steel pipe



Aluminum Offset Pipe Wrenches

- Aluminum Offset Pipe Wrenches feature a jaw opening parallel to the handle and a narrower hook jaw head. This lightweight wrench provides easy entry into tight spots.
- Ideal for overhead applications.

Catalog No.	Model No.	Description	Nom. Size		Pipe Capacity		Weight		Std. Pack
			in.	mm	in.	mm	lb.	kg	
31120	14	Aluminum Offset Pipe Wrench	14	350	2	50	2	0.9	6
31125	18	Aluminum Offset Pipe Wrench	18	450	2 1/2	65	3 1/2	1.6	6
31130	24	Aluminum Offset Pipe Wrench	24	600	3	80	6	2.7	6

Nom. Size = nominal length of handle

Nom. Pipe Capacity = maximum nominal diameter of steel pipe

Hex Wrenches



Hex Wrenches

- Hex jaw design gives multi-sided, secure grip on all hex nuts, square nuts, unions and valve packing nuts.
- The extra-wide opening offset model is ideal for securing drain nuts on sinks and tubs.
- Thin, smooth jaws slip into the tightest places.

Catalog No.	Model No.	Description	Nom. Size		Pipe Capacity		Weight		Std. Pack
			in.	mm	in.	mm	lb.	kg	
31305	E-110	Offset Hex	9 1/2	240	1 1/8 - 2 5/8	29 - 67	1 1/2	0.6	6
31275	17	Straight Hex	14 1/2	362	5/8 - 1 1/4	16 - 30	4 1/2	2.0	6
31280	25	Straight Hex	20	500	1 - 2	25 - 50	8 3/4	4.0	6

Spud Wrenches



Spud Wrenches

- 12" Spud Wrench features narrow jaws to fit into tight places.
- Smooth, toothless jaws ideal for square or rectangular stock.

Catalog No.	Description	Nom. Size		Pipe Capacity		Weight		Std. Pack
		in.	mm	in.	mm	lb.	kg	
31400	Spud Wrench	12	300	3/8 - 2 5/8	10 - 67	2 1/2	1.1	6

Chain Wrenches



Chain Wrenches

- A double jaw gives fast, ratchet-like action in either direction.
- The heavy-duty model has replaceable alloy steel jaws.
- The light-duty model has a one-piece forged alloy steel handle and jaw. Ideal for use in close quarters.

Catalog No.	Model No.	Description	Rated Pipe Capacity		Actual O.D. Capacity		Chain Length		Weight		Std. Pack
			in.	mm	in.	mm	in.	mm	lb.	kg	
31310	C-12	Light-Duty Chain Wrench	2	50	4	100	15 3/4	390	1 3/4	0.8	1
31315	C-14	Heavy-Duty Chain Wrench	2	50	5	125	18 1/2	460	2 3/4	1.2	1
31320	C-18	Heavy-Duty Chain Wrench	2 1/2	60	5	125	20 1/4	500	6	2.7	1
31325	C-24	Heavy-Duty Chain Wrench	3	75	5	125	20 1/4	500	8 1/4	3.7	1
31330	C-36	Heavy-Duty Chain Wrench	4 1/2	110	7 1/2	185	29	725	15 3/4	7.1	1

*Rated pipe capacity = nominal diameter that can be correctly tightened
Actual O.D. capacity = actual O.D. that chain can accommodate*

Compound Leverage Wrenches



Compound Leverage Wrenches

The compound leverage wrench offers a unique design that multiplies the turning force applied to a pipe. Ideal for freeing locked couplings and joints frozen by age or damage. Replaceable jaws are hardened alloy steel.

Catalog No.	Model No.	Description	Pipe Capacity		Weight		Std. Pack
			in.	mm	lb.	kg	
31375	S-2	Compound Leverage Wrench	2	50	7 1/4	3.3	1
31380	S-4A	Compound Leverage Wrench	5	125	33 1/2	15.2	1
31385	S-6A	Compound Leverage Wrench	6	150	45 1/2	20.6	1
31390	S-8A	Compound Leverage Wrench	8	200	68 1/2	31.1	1

*Nom. Size = nominal length of handle
Nom. Pipe Capacity = maximum nominal diameter of steel pipe*

WRENCHES

Chain Tongs



Chain Tongs

- Designed and sized to provide extra leverage for the toughest jobs.
- All models feature double-end jaw styles which can be reversed, except Model 3215, which is a single-end tong.

Catalog No.	Model No.	Description	Total Length		Pipe Capacity		Chain Length		Chain Breaking Load		Weight		Std. Pack
			in.	mm	in.	mm	in.	mm	lb.	kg	lb.	kg	
92660	3215	Single-End Chain Tongs	87	2,209	4 - 18	114 - 457	74 1/2	1,892	56,000	25,401	156	71	1
92665	3229	Double-End Chain Tongs	27	686	1/4 - 2 1/2	13 - 73	17 1/2	445	13,800	6,260	11	5	1
92670	3231	Double-End Chain Tongs	37	939	3/4 - 4	26 - 114	22 1/2	572	17,600	7,983	21	10	1
92675	3233	Double-End Chain Tongs	44	1,117	1 - 6	33 - 168	32	813	20,100	9,117	29	13	1
92680	3235	Double-End Chain Tongs	50	1,270	1 1/2 - 8	48 - 219	40 1/2	1,29	22,000	9,979	39	18	1
92685	3237	Double-End Chain Tongs	64	1,625	2 - 12	60 - 323	55 1/2	1,410	31,000	14,061	67	30	1

Strap Wrenches



Replacement Straps

Catalog No.	Strap Length		Strap Width	
	in.	mm	in.	mm
31990	17	425	1/2	12
32015	17	425	1 1/8	30
32020	24	600	1 1/8	30
32025	30	760	1 1/8	30
32050	29 1/4	750	1 3/4	45
32055	48	1,200	1 3/4	45
32035	17	425	1 1/16	27
32065	30	760	1 3/4	45

Strap Wrenches

- Strap Wrenches are best for any polished pipe.
- Strong, woven nylon strap gives tight grip.
- Two models available for plastic pipe.
- Polyurethane-coated strap.

Catalog No.	Model No.	Description	Handle Length		Strap Length		Strap Width		Pipe Capacity		O.D. Tube Capacity		Weight		Std. Pack
			in.	mm	in.	mm	in.	mm	in.	mm	in.	mm	lb.	kg	
31335	1	Strap Wrench	11 3/4	300	17	425	1/2	12	2	50	-	-	1 1/4	0.5	1
31340	2	Strap Wrench	11 3/4	300	17	425	1 1/8	30	2	50	-	-	1 3/4	0.8	1
31345	2	Strap Wrench	11 3/4	300	30	760	1 1/8	30	2	50	-	-	1 3/4	0.8	1
31350	2	Strap Wrench	11 3/4	300	24	600	1 1/8	30	2	50	-	-	1 3/4	0.8	1
31355	2P*	Strap Wrench	11 3/4	300	17	425	1 1/16	27	2	50	-	-	1 3/4	0.8	1
31360	5	Strap Wrench	18	450	29 1/4	750	1 3/4	45	5	125	-	-	2	0.9	1
31365	5	Strap Wrench	18	450	48	1,200	1 3/4	45	5	125	-	-	2	0.9	1
31370	5P*	Strap Wrench	18	450	29 1/4	750	1 3/4	45	5	125	-	-	2 1/8	1.0	1

*Strap designed for use with plastic pipe.

Adjustable Wrenches



Adjustable Wrenches

- High grade chrome-vanadium alloy steel.
- Forged and heat-treated for durability.
- Cobalt-plated finish to reduce rust and corrosion.
- Jaw scales in SAE and metric for quick adjustment.

Catalog No.	Model No.	Description	Nom. Size		Jaw Opening		Weight		Std. Pack
			in.	mm	in.	mm	lb.	kg	
86902	756	6" Adjustable Wrench	6	150	3/4	20	1/4	0.1	2
86907	758	8" Adjustable Wrench	8	200	7/8	25	1/2	0.2	2
86912	760	10" Adjustable Wrench	10	250	1 1/8	30	3/4	0.3	2
86917	762	12" Adjustable	12	300	1 5/16	35	1 1/2	0.6	2
86922	765	15" Adjustable	15	375	1 11/16	40	3	1.3	2
86927	768	18" Adjustable	18	450	2 1/8	50	5 1/8	2.3	2
86932	774	24" Adjustable	24	600	2 7/16	60	9 1/4	4.2	1

Specific Purpose Wrenches

Basin Wrenches



- The RIDGID® Basin Wrench is an ideal tool for use in tight spaces and under sink applications.
- Spring-loaded jaws of forged alloy steel provide fast, one-hand ratcheting.
- Tension plug holds head in any position up to 90° angle.
- Telescopic shanks on Models 1017 and 1019 quickly adjust for lengths from 10" to 17".

Catalog No.	Model No.	Description	Nominal Size		Pipe Capacity		Weight		Std. Pack
			in.	mm	in.	mm	lb.	kg	
31175	1017	Telescoping Basin	10 - 17	240 - 425	3/8 - 1 1/4	10 - 32	2	0.9	1
31180	1019	Telescoping Basin	10 - 17	240 - 425	1 1/4 - 2 1/2	32 - 65	2	0.9	1

Faucet & Sink Installer



The RIDGID Faucet and Sink Installer is a multipurpose under-sink plumbing tool. This tool is used to fasten and remove plastic basin nuts, supply line nuts, along with 7/8" and 1" hex nuts. The tool also features an aluminum insert for turning angle stop handles, and another aluminum insert for holding strainer baskets in place. Its extra long construction makes it ideal for hard to reach applications. The RIDGID Faucet & Sink Installer is a great addition to any toolbox.

Extra long to turn hard to reach mounting nuts on faucets, sprayers and ball cocks.

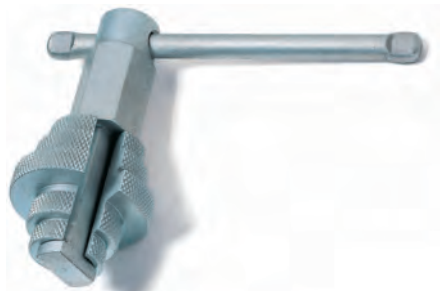
- Notched ends engage 2, 3, 4, and 6 tab basin nuts.
- Open slot allows easy access over existing supply lines.
- Shut off valve attachment turns hard to reach angle stops without marring chrome.
- Strainer basket attachment holds drain unit in place while tightening strainer nut.
- 7/8" & 1" metal or plastic hex nuts.
- Light weight, high strength plastic construction with durable aluminum inserts.



Catalog No.	Model No.	Description	Nom. Size		Weight		Std. Pack
			in.	mm	lb.	kg	
66807	2006	Faucet & Sink Installer	10 1/4	260.35	0.77	0.35	6

WRENCHES

Specific Purpose Wrenches



Internal Wrenches

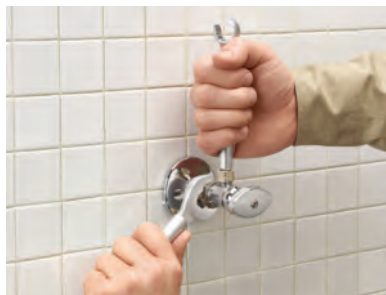
- Holds closet spuds and bath, basin and sink strainers through 2". Use to install or extract Schedule 40 1" through 2" nipples.
- Jaws expand by eccentric action and are reversible for various sizes.

Catalog No.	Model No.	Description	Nom. Size		Pipe Capacity		Weight		Std. Pack
			in.	mm	in.	mm	lb.	kg	
31405	342	Internal	4 1/2	113	1 - 2	25 - 50	1 5/8	0.7	1



One Stop Wrenches

- The One Stop Wrench is two wrenches in one.
- It provides the exact size wrench you need to install angle stops and compression couplings.



Catalog No.	Model No.	Description	Nom. Size		Weight		Std. Pack
			in.	mm	lb.	kg	
27023	2002	One Stop	-	-	0.73	0.3	1

Wrench Parts: Always Insist On Genuine RIDGID® Parts



Wrench Size		Pipe Cap.	Handle Assembly				Nut	Pin	Heel Jaw & Pin Assembly	Coil & Flat Spring Assembly	Hook Jaw
Str.	End		Straight Iron	Straight Aluminum	End Iron	End Aluminum	Catalog No.	Catalog No.	Catalog No.	Catalog No.	Catalog No.
			Catalog No.	Catalog No.	Catalog No.	Catalog No.					
6	E-6	¾	31420	—	31470	—	31570	31575	31560	31565	31555
8	E-8	1	31425	—	31475	—	31595	31600	31585	31590	31580
10	E-10	1½	31430	31510	31480	93907	31615	31625**	31610	31620	31605
12	E-12	2	31435	49972	31485	—	31645	31650	31635	31640	31630
14	E-14	2	31440	31515	31490	93912	31665	31650**	31635	31660	31655
18	E-18	2½	31445	31520	31495	93917	31685	31690	31675	31680	31670
24	E-24	3	31450	31525	31500	93922	31710	31715	31700	31705	31695
36	E-36	5	31455	31530	31505	—	31735	31740	31725	31730	31720
48	—	6	31460	31535	—	—	31760	31765	31750	31755	31745
60	—	8	31465	—	—	—	31785	31790	31775*	31780	31770
10 Raprench	—	1½	32775	—	—	—	31615	31625	31610	31620	31605

* Use with 60" Hook Jaw catalog number 31770.

** Pin for 10" Aluminum End Handle Assembly is catalog no. 95402. Pin for 14" Aluminum End Handle Assembly is catalog no. 95407. For additional wrench parts, see RIDGID Hand Tool Parts Catalog.

INNOVATION
TECHNOLOGY
TRADITION
CONFIDENCE
RIDGID

